

HOMESTEAD CARDS



UNION MADE

Greetings

Holiday 2022 Catalog





Holiday 2022

YOUR Local 123 P.O. Box 1234 Portland, OR 97208

Our entire organization
joins in wishing you
a Happy Holiday Season
and a Prosperous New Year.

YOUR LOCAL 503
PORTLAND, OR



Order by Mail

4824 NE 42nd Ave.
Portland, OR 97218



Quick Online Ordering

Search for any item number at
www.homesteadcards.com
Easy online proofing.



Find Us on Facebook

facebook.com/homesteadcards



Follow Us on Twitter

@homesteadcards
for specials and #union news



Envelope Imprinting

All Homestead Cards come with free white-wove envelopes. Make a special impression with envelopes imprinted with your address in a font to match your holiday cards. Saves time, looks great, and the union bug is printed on the envelope. Imprinting is \$50 minimum, see page 18 for details.

Front imprint

Some cards are designed to include your union name, local number, or other information.

Verse

Choose from our eight popular holiday verses, or write your own message by choosing holiday verse II on the order form. The standard font size allows for five lines at 29 characters per line.

Imprint

Below the verse, add your personalization. The standard font size allows for four lines of 37 characters per line. Many customers begin with "From all of us at..." or "From the officers, staff and members of..."

Price List (A)

50	227.00
75	288.00
100	325.00
150	420.00
200	540.00
250	607.00
300	686.00
350	725.00
400	782.00
450	840.00
500	855.00
1000	1426.00
2500+	\$136 per 100

Price List (B)

50	175.00
75	186.00
100	235.00
150	350.00
200	412.00
250	486.00
300	546.00
350	616.00
400	658.00
450	725.00
500	742.00
1000	1325.00
2500+	\$121 per 100

Price List A includes:

- * Full-Color Logo
- * Your union name
- * Your custom message
- * White wove, self-seal envelopes, **NOT** imprinted

Price List B includes:

- * Your union name
- * Your custom message
- * White wove, self-seal envelopes, **NOT** imprinted
- * No altering of card style



Shipping charges for different quantities are listed on the back of the order form, in the center of this catalog.

HOMESTEAD CARD

UNION MADE GREETINGS

New for 2022



HC2211 | 3 Gingerbread Men

(B)



HC2202 | Ornament

(B)



HC2214 | Winterscape

(A)



HC2212 | Holiday Parade

(A)



HC2209 | Joy

(B)

HOMESTEAD CARD

UNION MADE GREETINGS

New for 2022



HC2208 | Botanical Christmas



HC2215 | Holiday Cookies



HC2220 | Happy Holidays



HC2204 | Ho Ho Ho



HC2213 | Christmas Loading



HOMESTEAD CARD

UNION MADE GREETINGS

New for 2022



HC2216 | Mini Tree

(A)



HC2214 | Holly Berries

(B)



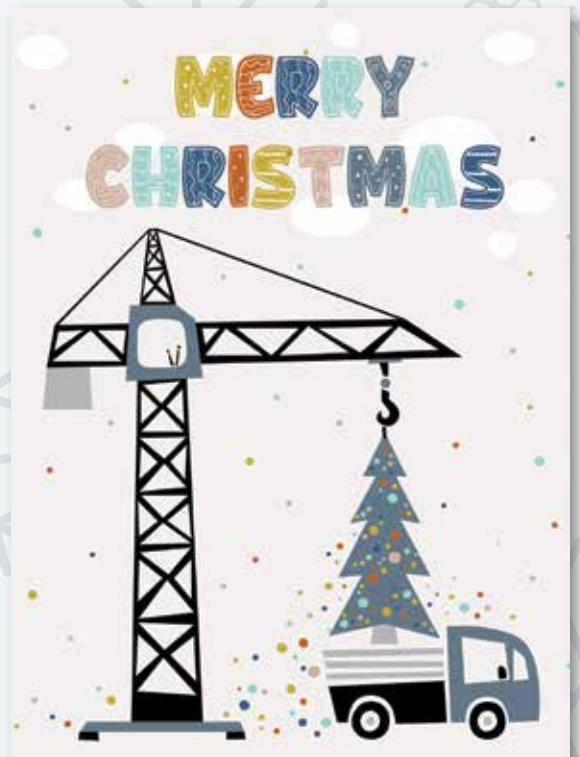
HC2217 | Snowflake

(B)



HC2203 | Xmas Wrenches

(B)



HC2207 | Holiday Crane

(B)

HOMESTEAD CARDS

UNION MADE GREETINGS

New for 2022



HC2218 | Forklift Santa

(B)



HC2205 | Snowman

(B)



HC2221 | Presents

(B)

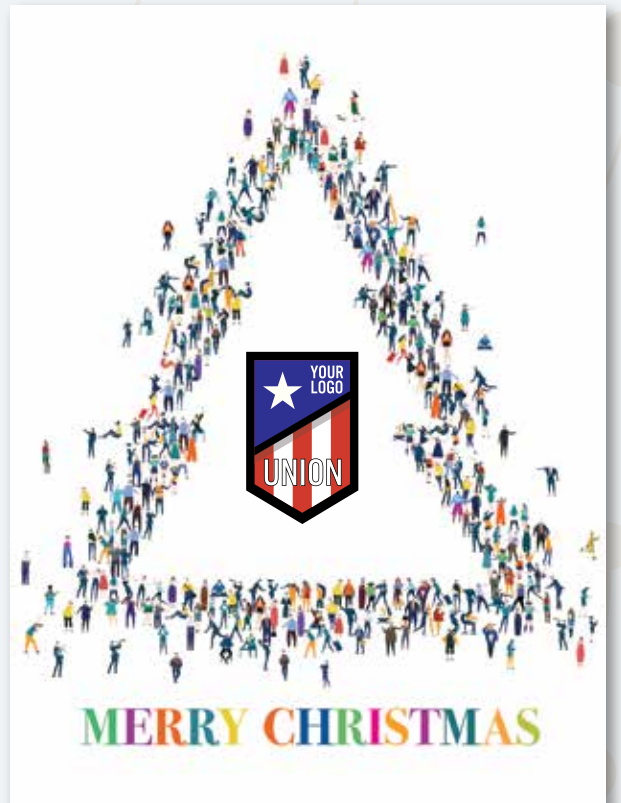
Many More Exciting Design Options

Available online at homesteadcards.com



Save Time & Labor with Seal-&-Stuff

Your cards arrive sealed in their envelopes.
35¢ per piece, see page 19.



HC2201 | Xmas Crowd

(A)

HOMESTEAD CARDS

UNION MADE GREETINGS

New Year



HC2107 | Fireworks Happy New Year

(B)



HC2117 | Cheers to a New Year

(B)



HC2121 | Sunrise New Year

(B)



HC2108 | Happy New Year Pink

(B)



HC2120 | Art Deco New Year

(A)

HOMESTEAD CARDS

UNION MADE GREETINGS

Best Sellers



HC2102 | Snowy Tree

(B)



HC2111 | Paper Christmas

(B)



HC1917 | Snow Light

(A)



HC2124 | Toy Holiday Greeting

(A)



HC2476 | Blue Christmas

(B)



HOMESTEAD CARDS

UNION MADE GREETINGS

Best Sellers



HC2109 | Tech Jingles

(A)



HC2004 | Holiday Lane

(A)



HC2122 | Post Greetings

(B)



HC2115 | Cutout Christmas Trees

(B)



HC2110 | Wreath Wishes

(A)

HOMESTEAD CARDS

UNION MADE GREETINGS

Best Sellers



HC2015 | Wreath

(A)



HC1719 | Lots of Santas

(B)



HC1709 | Red, White & Blue Greetings

(B)



HC1909 | Union Christmas Village

(A)



H2495 | Joy of the Season Majestic

(B)



11

HOMESTEAD CARDS

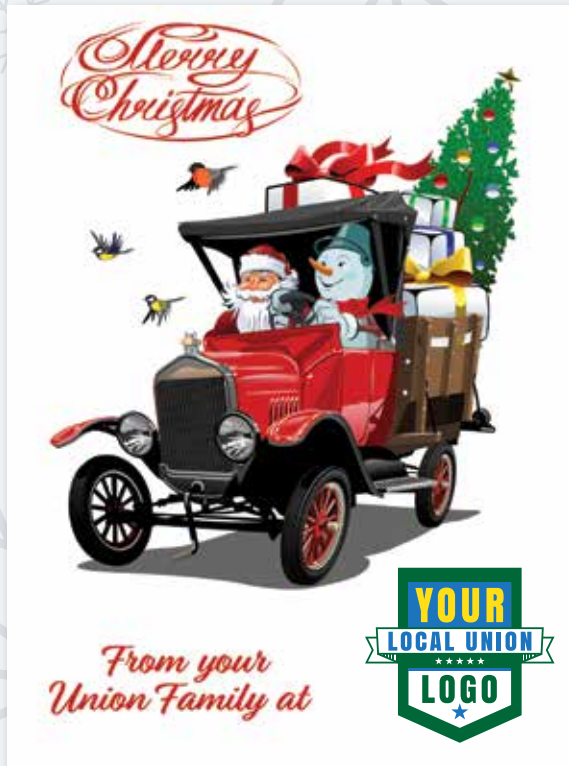
UNION MADE GREETINGS

Best Sellers



HC1511 | Happy Holidays

(A)



HC1905 | Merry Delivery

(A)



HC1903 | Holiday Helpers

(A)



HC2118 | Holly Jolly

(A)



HC2009 | Gingerbread Wreath

(B)

HOMESTEAD CARDS

UNION MADE GREETINGS

Best Sellers



HC1506 | Celebrating Peace & Unity

(A)



H2493 | Happy Holidays

(A)



H2470 | Season's Greetings Solidarity

(B)



HC1705 | Union Elves

(A)



HC1711 | People Tree

(B)

HOMESTEAD CARDS

UNION MADE GREETINGS

Best Sellers



HC1504 | Season's Greetings 2021



HC1804 | On The Road



HC1704 | Merry Ornaments



H2430 | Joy of the Season - Tree at Dusk



HC2007 | Elf Wishes



HOMESTEAD CARDS

UNION MADE GREETINGS

Best Sellers



HC1510 | Merry Christmas From Your Local Union

(A)



HC1501 | Reindeer Union

(A)



HC1912 | Holiday Happiness

(A)



HC1508 | Solidarity Bird

(B)



HC1718 | A Season of Peace

(B)

HOMESTEAD CARDS

UNION MADE GREETINGS

Occasions



All cards A7 size (5" x 7") with white wove envelopes.

- A7101 Happy Birthday
- A7102 Congratulations
- A7104 Get Well Soon
- A7105 Thank You
- A7106 Our Deepest Sympathy

Occasions Verse Selection

HAPPY BIRTHDAY!

- A** Best wishes on your birthday for good health and happiness throughout the year.
- B** Today is a most beautiful day ... ENJOY!
- C** Sincere good wishes on your special day!

CONGRATULATIONS!

- D** Congratulations and best wishes for continued success in all that you do.
- E** Great Job!
- F** Congratulations on your accomplishments.

CONGRATULATIONS ON YOUR RETIREMENT!

- G** Wishing you a long and happy retirement full of good health and contentment.
- H** Wishing you all the best on this very special occasion.
- I** Retirement ... a time for looking back with pride ... a time for looking ahead with anticipation.

GET WELL

- J** Wishing you well ... SOON!
- K** A speedy recovery ... from all of us.
- L** Take care ... and get well soon.

THANK YOU!

- M** ... from the bottom of my heart.
- N** Your kindness couldn't be appreciated more ... Thanks!
- O** Your consideration was very much appreciated ... Thank you
- P** Thank you for the helping hand.
- Q** You're one of a kind!
- R** Sincere thanks for your extra efforts.

SYMPATHY

- S** May it comfort you to know that others understand and share your sorrow.
- T** Gone from our sight but never our memories. May memories of your loved one give you strength to meet tomorrow.
- U** Extending sincere sympathy to you in your time of sorrow.
- V** Though we cannot ease the sorrow of the loss you must bear, we hope that you'll be comforted by knowing others care.
- W** Please accept condolence on the loss of your loved one.



Holiday Verse Selection

- AA** We wish you the Peace and Joy
of this Holiday Season
and the Very Best New Year.
- BB** Our entire organization joins in
wishing you a Happy Holiday Season
and a Prosperous New Year.
- CC** Holiday Greetings and
Best Wishes for the New Year...
Yours in Solidarity.
- DD** Season's Greetings
and Best Wishes
for a Happy New Year.
- EE** One of the real joys of the
Holiday Season is the opportunity
to say Thank You and to
wish you the very best
for the New Year.
- FF** During the Holiday Season
more than ever,
our thoughts turn gratefully
to those who have made
our progress possible.
- GG** Wishing you a Merry Christmas
and Best Wishes for the
New Year.
- HH** May the feeling of Solidarity
Warm your heart
And the hearts of your loved ones
Throughout the holiday
And the coming year.
- II** (The text of your choice)
- JJ** (No Verse)

Easy Ordering Instructions

Ordering

Order online or by email, phone or mail.
Your order form is in the center of this
catalog.

www.homesteadcards.com
sales@homesteadcards.com
(877) 515-5010 toll-free
Homestead Cards
4824 NE 42nd Ave.
Portland, OR 97218

Proof Approval

All orders receive an email PDF for review
and approval. Production cannot begin
without proof approval. After proof
approval, production time is 10 working
days.

Logos

Some cards are designed for your logo on
the front. Printing is included in the price
of the card. Your logo can be printed in full
color. Gold foil is discontinued.

Signatures

Printing your handwritten signatures is
at no extra charge. Simply sign a white
piece of paper in black ink, scan at high
resolution (600 dots per inch), and email
to sales@homesteadcards.com.

Front imprint

Some cards are designed to include
your union name, local number, or other
information. Use the "front imprint"
section of the order form.

Verse

Choose from our eight popular holiday
verses, or write your own message by
choosing holiday verse II on the order
form. The standard font size allows for
five lines at 29 characters per line.

Imprint

Below the verse, add your personalization.
The standard font size allows for four lines
of 37 characters per line. Many customers
begin with "From all of us at ..." or "From
the officers, staff and members of..."

Imprint Colors

Black imprinting is standard, except as
noted. For an imprint in red, green, blue
or burgundy ink, indicate the color choice
above "subtotal" on the order form.

Fonts

The Bernhard Modern typeface is used
for card personalization. You may also
provide digital art for your inside imprint.
Email a high-resolution PDF file sized at
5" x 7" (vertical) or 7" x 5" (horizontal).

Envelope Imprinting

Orders include blank FastStick envelopes.
Envelope imprinting is \$50 minimum, 35¢
each up to 1000 qty., and 30¢ each above
1000 qty. Envelopes are imprinted in black
ink.

Mailing Services

Prepare your mailing list as a Microsoft
Excel file and attach to an email to
sales@homesteadcards.com. When
preparing your list, use column headers
which clearly identify each column.
Remove any other information from the
Excel file. Cards will arrive to you ready to
drop in the mail at your local post office.
Or, cards can be direct-mailed first class
from our mailing facility.



Order Online

homesteadcards.com

Choose and customize your
card - easy online proofing.

Order by Phone

877-515-5010

8 a.m. to 5 p.m. PST

Leave a message or

Email Orders to

sales@homesteadcards.com

Order by Mail

Homestead Cards

4824 NE 42nd Ave.

Portland, OR 97218

EASY Online Shopping!

1 Select your Card.

Price List (A)

50	227.00
75	288.00
100	325.00
150	420.00
200	540.00
250	607.00
300	686.00
350	725.00
400	782.00
450	840.00
500	855.00
1000	1426.00
2500+	\$136 per 100

Price List A includes:

- ✳ Full-Color Logo
- ✳ Your union name
- ✳ Your custom message
- ✳ White wove, self-seal envelopes, **NOT** imprinted

Price List (B)

50	175.00
75	186.00
100	235.00
150	350.00
200	412.00
250	486.00
300	546.00
350	616.00
400	658.00
450	725.00
500	742.00
1000	1325.00
2500+	\$121 per 100

Price List B includes:

- ✳ Your union name
- ✳ Your custom message
- ✳ White wove, self-seal envelopes, **NOT** imprinted
- ✳ No altering of card style

HOMESTEAD CARDS

UNION MADE GREETINGS



Insert Only

Your cards arrive in unsealed envelopes. Local unions use this handy service when they wish to insert another item into the envelope before sealing.

30¢ per piece

Allow (2) working days.

Stuff-&-Seal

Your cards arrive sealed in their envelopes, ready for addressing and mailing.

35¢ per piece

Allow (2) working days

Mailing Services

Your cards addressed, stamped and shipped to you ready-to-mail or, direct-mailed first class to your members and affiliates.

60¢ per piece

Plus first-class postage.

Allow (5) working days.



EASY Online Ordering at www.homesteadcards.com

2 Customize your card to make it yours.

3 Approve your proof online to place your order!

HOMESTEAD CARDS

UNION MADE GREETINGS



HAPPY

holidays

